

# MAX HD2 IP67

Dual 4G LTE Outdoor Mobile Router



Compatible



\*Selected models

The HD2 IP67 offers dual embedded cellular modems and PoE support, all encased in a shock and vibration certified, waterproof enclosure that's more than a match for almost any environment.



## Dual Cellular for Multiple Carrier.

The HD2 IP67 includes two built-in outdoor 4G LTE/3G modems. It allows you to use the same or different cellular providers for bandwidth bonding or eliminating blind spots.

List of supported 4G LTE carriers at: [peplink.com/lte-networks/](http://peplink.com/lte-networks/)

SpeedFusion™  
Bonding Technology



## SpeedFusion Bandwidth Bonding and Seamless Failover.

SpeedFusion bandwidth bonding technology bonds all connected bandwidth into a single superfast stream, using the same or different cellular providers.



Water-proof



Dust protected



Lightning Immunity



Shock and Vibration



## Super-Duty IP67 Enclosure. Shock and Vibration Certified.

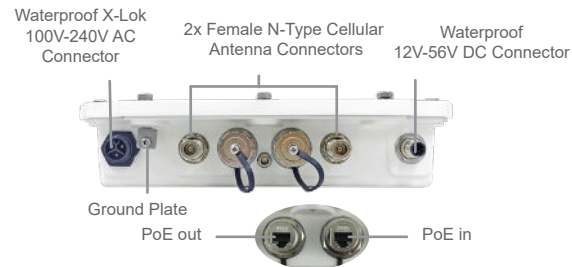
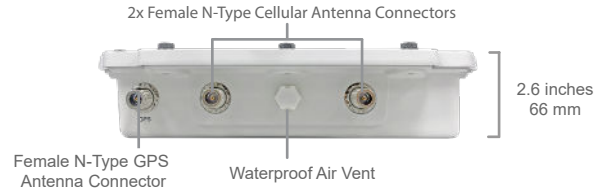
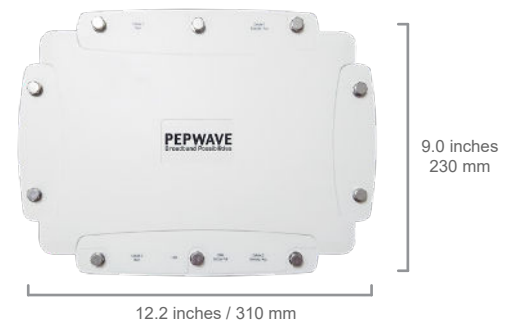
Its waterproof IP67 metal enclosure stands up to dust, vibration, and inclement weather. And, it is certified shock and vibration resistant, making it a great choice for construction, drilling, and other heavy-duty applications.

## Optional PoE Input.

Cut down on cabling and simplify deployments. The HD2 IP67 supports 802.3at PoE input, so one wire is all you need for both connectivity and power. 802.3at PoE Injector is available separately.

# Specifications

MAX HD2 IP67	
WAN Interface	1x 10/100/1000M Ethernet Port 2x Embedded LTE Modems
LAN Interface	1x 10/100/1000M Ethernet Ports
Router Throughput	400Mbps
Recommended Users	25-150
Cellular Antenna Connector	4x Female N-Type Cellular Antenna Connectors 1x Female N-Type GPS Antenna Connector
Included Antenna	Built-In Omni Antenna Cellular Antenna gain: 3dBi for 2.4GHz
Power Input	Power over Ethernet 802.3at PoE+ # AC Input 100V-240V* , DC Input 12V-56V
Power Consumption	25W (max.)
Dimensions	9.0 x 12.2 x 2.6 inches 230 x 310 x 66 mm
Weight	5.84 pounds 2.65 kg
Operating Temperature	-40° – 149°F -40° – 65°C
Humidity	15% – 95% (non-condensing)
Certifications	FCC, CE, RoHS, IC RF Port Lightning Immunity: ITU-T K.20 (+/- 1.5 kV) Shock and Vibration Resistance: EN 61373:2010 IEC 61373:2010
Warranty	1-Year Limited Warranty
Package Content <sup>^</sup>	MAX HD2 IP67, Waterproof 100V-240V AC Female Connector, Waterproof 12V-56V DC Female Connector, 2x Waterproof Ethernet Connector Kit (ACW-112), Mounting Kit (ACW-723)



# PoE Injector is available separately.  
\* Support PSE output.  
^ Wi-Fi / Cellular antennas are not included.

## Ordering Information

	Product Code	Carrier/Region	Cellular Standard	4G Bands	3G Bands
LTE	MAX-HD2-M-LTEA-B-IP67	APAC, EMEA / CAT-6	LTE Advanced	4G LTE-A: B1, B2, B3, B4, B5, B7, B8, B12, B13, B14, B17, B18, B19, B20, B25, B26, B28, B29, B30, B38, B39, B40, B41, B42, B43, B48, B66, B71	HSPA+/WCDMA: B1, B2, B4, B5, B6, B8, B9, B19
	MAX-HD2-M-LTEA-W-IP67	Worldwide / CAT-6	LTE Advanced	4G LTE-A: B1, B2, B3, B4, B5, B7, B8, B12, B13, B20, B25, B26, B29, B30, B41	2500WCDMA/HSPA+/DC-HSPA+: B1, B2, B3, B4, B5, B8
	MAX-HD2-M-LTEA-P-IP67	Asia Pacific / CAT-6	LTE Advanced	4G LTE-A: B1, B3, B5, B7, B8, B18, B19, B21, B28, B38, B39, B40, B41	WCDMA/HSPA+/DC-HSPA+: B1, B5, B8, B9, B19 UMTS: B6 TD-SCDMA: B39
	MAX-HD2-M-LTEA-R-IP67	America / FirstNet / CAT-12	LTE Advanced	4G LTE-A: B1, B2, B3, B4, B5, B7, B8, B9, B12, B13, B14, B18, B19, B20, B26, B29, B30, B32, B41, B42, B43, B46, B48, B66	HSPA+: B1, B2, B4, B5, B6, B8, B9, B19
	MAX-HD2-M-LTEA-WF-IP67	America / Europe / FirstNet / CAT-12 / CAT-6	LTE Advanced Pro: Cellular 1 LTE Advanced: Cellular 2	Cellular 1: 4G LTE-A Pro: B1, B2, B3, B4, B5, B7, B8, B9, B12, B13, <b>B14</b> , B18, B19, B20, B26, B29, B30, B32, B41, B42, B43, B46, B48, B66 Cellular 2: 4G LTE-A: B1, B2, B3, B4, B5, B7, B8, B12, B13, B20, B25, B26, B29, B30, B41	Cellular 1: HSPA+: B1, B2, B4, B5, B6, B8, B9, B19 Cellular 2: WCDMA/HSPA+/DC-HSPA+: B1, B2, B3, B4, B5, B8
	MAX-HD2-M-LTEA-WK-IP67	Global* / CAT-12 / CAT-6	LTE Advanced Pro: Cellular 1 LTE Advanced: Cellular 2	Cellular 1: 4G LTE-A Pro: B1, B2, B3, B4, B5, B7, B8, B9, B12, B13, B18, B19, B20, B26, B28, B29, B30, B32, B41, B42, B43, B46, B48, B66 Cellular 2: 4G LTE-A: B1, B2, B3, B4, B5, B7, B8, B12, B13, B20, B25, B26, B29, B30, B41	Cellular 1: HSPA+: B1, B2, B4, B5, B6, B8, B9, B19 Cellular 2: WCDMA/HSPA+/DC-HSPA+: B1, B2, B3, B4, B5, B8
LTE	MAX-HD2-M-LTE-E-IP67	Europe / International / CAT-4	LTE	4G LTE: B1, B3, B5, B7, B8, B20, B38 (TDD), B40(TDD), B41 (TDD)	WCDMA/HSDPA/HSUPA/HSPA+/DC-HSPA+: B1/2100, B2/1900, B5/850, B6/800, B8/900

\*China & HK TD LTE are excluded.